



INSTALLATION OF GRINDER PUMP CONTROL PANEL

Customer Assistance Bulletin #20

1. All electrical work must be completed by a licensed electrician by the "State of Texas". All electrical work must be done Per the NEC code.

2. The city pays for all electrical power used by the grinder pump, therefore the power supplied to the control panel disconnect will come from the line side of the meter base. There must be a control panel disconnect used as a means of disconnecting the power from the meter to the grinder pump control panel. The disconnect will be mounted to the meter base either below or on either side of it, what ever best fits the application, then run the conduit from the disconnect to the control panel. The City of Weatherford uses a specific control panel disconnect, if the property in question does not have a disconnect the city will furnish one, call one of the numbers on the back sheet of this packet, to request one.

If the meter base is already energized you must contact the "City of Weatherford" utilities dispatcher (phone numbers will be posted at the end of this sheet) and schedule a time to have a utilities lineman come out and kill power to the residence so that you may hook up the 2 circuit disconnect panel that feeds the grinder pump control panel. You should have everything ready to be energized before calling out the utilities lineman.

Warning : Do not attempt to work this live or do not attempt to de-energize the residence on your own.

3. Wiring from the electrical meter to the control panel will be wired as in diagram "A".

4. All conduits from all electrical box's will be installed on the outside wall of the structure and may be buried in a schedule 40 gray electrical type PVC conduit as long as it does not run under any part of the structure including concrete drive ways, sidewalks etc. No more than 3-90 degree bends will be allowed without a junction pull box. No conduits will be ran on the inside of walls, underneath the floor, or above the ceiling. We must be able to access all parts of the grinder pump assembly without entering or destroying any part of the structure, including conduits, panels, power source, etc.

5. A 2" schedule 40 gray electrical PVC type conduit will be installed from the control panel to the wet well. Two pieces of 1 5/8" galvanized unistrut and unistrut straps will be

used to secure 2" pvc to the structure or at least 2- 2" mineral lac standoff squeeze type straps to fit around the 2" PVC , see diagram "B". It will also be buried at least 6" below finished grade.

6. Use male adapters and lock rings on both ends of pvc conduit's.

7. The control panel CANNOT be located any further than 10' from the wet well, If for some reason you cant maintain this distance please call the utility electrician for approval. (Utility electrician phone numbers at the end of this sheet)

8. All conduits installed between meter base, 2 circuit breaker panel ,and control panel will be weatherproof. Raintight connectors and/or myers hubs will be used. No flex of any kind will be allowed to be used to connect any part of the grinder pump panels, etc. together. All conduits will be metallic (EMT) unless they are running from the structure in to the ground.

9. Do not cut the length of any of the floats or motor leads. Excess length will need to be rolled up, tie rapped, and hung on the J-hooks in the wetwell.

10. Leave at least 12" of slack for float and motor leads brought into the control panel so the city electrician can make wires up on terminal strip.

11. The city electrician will set floats to proper levels in the wetwell.

12. The control panel is to be mounted approximately 54" from the bottom of the control panel to finished grade.

13. The control panels red light must be visible from the street.

14. Contact the Code Enforcement Office, located at 122 S. Alamo, if the conditions cannot be met.

15. If residence meter base is new and has not been energized yet the grinder pump control systems will be required to pass inspection before electricity can be turned on.

16. Please refer to drawing on back page as to what the station should look like.

Utilities hours are from 8:00 am to 5:00 pm Monday thru Friday.

Utilities dispatcher (817) 598-4257

or

After hours emergency's only (817) 598-4301 (Weatherford Police Dept)

Utility electricians :

Wade Branch - Office (817) 598-4024 Cell - (817) 597-6483

Casey Jones - Office (817) 598-4024 Cell - (817) 565-4082

If your remodeling please read the following !!

Attention contractor / homeowner, If your going to be remodeling, demolishing or moving your current structure on your lot, please read carefully !!

Locate the grinder pump control panel on your structure (it's a grey 2' x 3' rectangular box) if your are going to have to remove it off the wall, please have a licensed electrician unhook and clear any wiring up that may be a danger. You the home owner will be responsible for and must take possession of all the electrical components that where removed from the structure and store them in an adequate area away from harms way while construction is being done. When the construction is done your licensed electrician will be resposible for putting the grinder pump systyem back up ,per city of Weatherfords spec's.

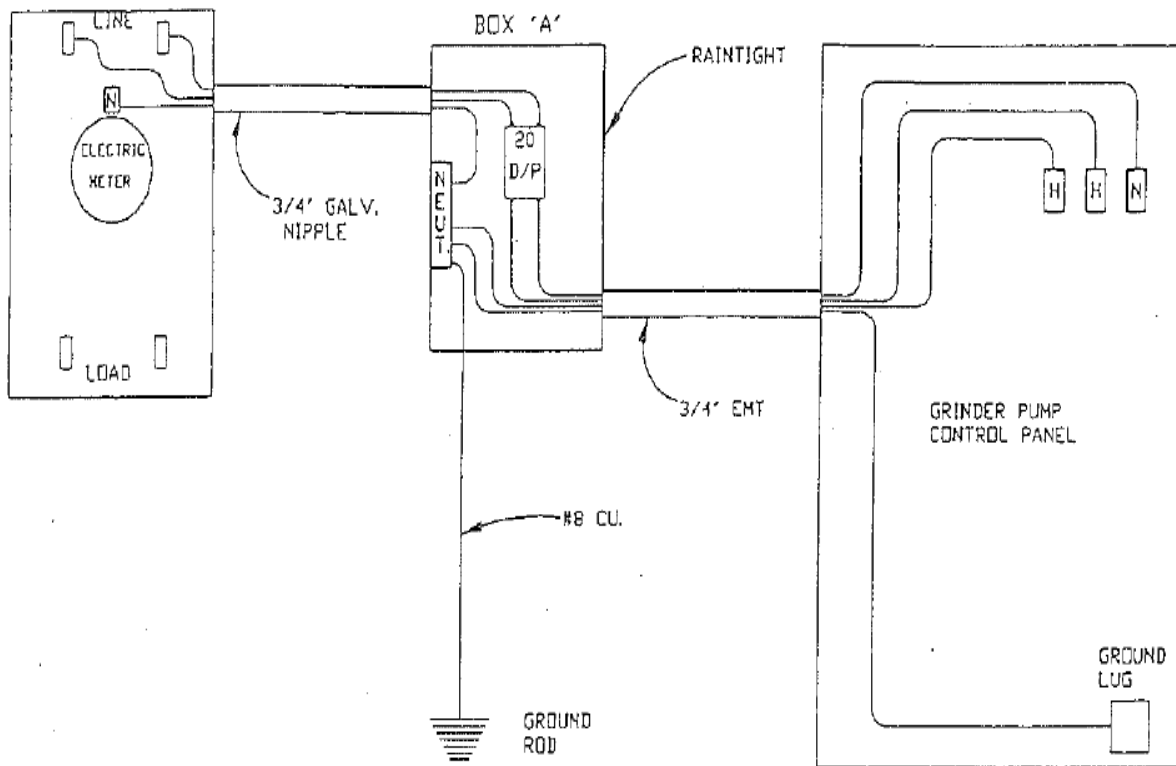
When you have located the grinder pump control panel on the structure look at the ground somewhere approximately 10 foot or so from the edge of the structure at the ground level ,you should see a small approximately 3 foot in diameter, round ,green fiberglass lid. It may have grass or some sort of landscaping covering it. This is a lid for a underground fiberglass sewer storage basin, you need to be aware of where this basin is and help protect it. Its buried about 4 feet in the ground- it could be very easily damaged during construction by a vehicle, heavy machinery ,etc running over it. This basin has a pump and motor in the bottom of it that could also be damaged. You will have to reuse it when the construction phase is over. Basin should be found and clearly marked and if possible some how barricaded off while construction is taking place. Remember if any part of this grinder pump assembly is damaged, lost or stolen it will be the homeowners financial responsibility to replace it. This is why it is so important to follow these procedures.

If you have any questions feel free to call me Monday thru Friday 8am to 5 pm.

(817) 597-6483

Leave message, if no one answers and I'll get back to you as soon as possible.

Thanks, Wade Branch
Utility Electrician
City of Weatherford



1. All Conductors From The Utility Meter To Box 'A' Will Be #8 CU.
2. All Conductors From Box 'A' To Control Panel Can Be #10 CU.

DIAGRAM "A"

NOTE: Re-use Box 'A'. If Your Setup Did Not Have One Prior, Then The City Will Provide One For You.

DIAGRAM "B"

Install The PVC Conduit To The Left Side of The Control Panel In Order TO Stay Away From The Terminal Block.

